

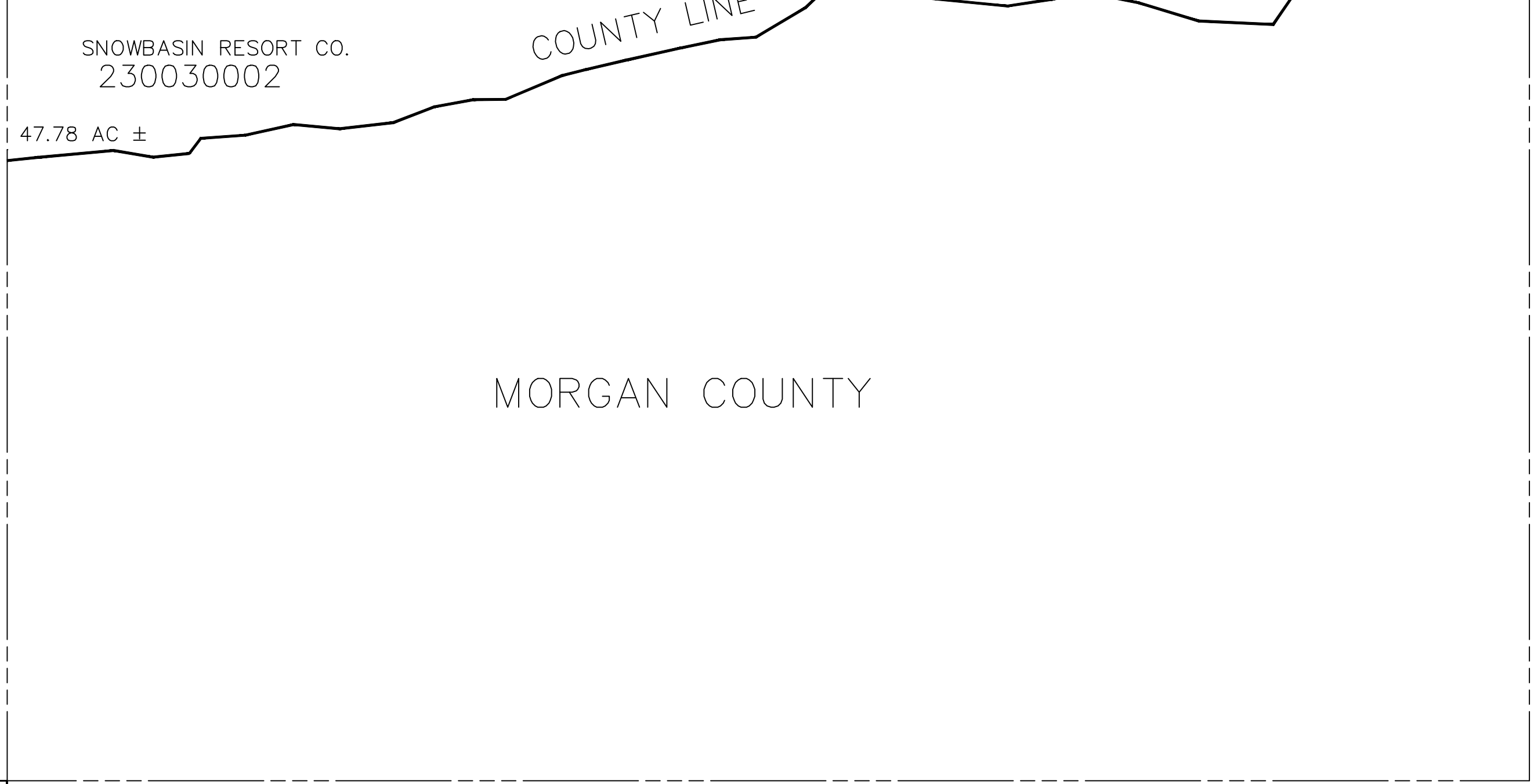
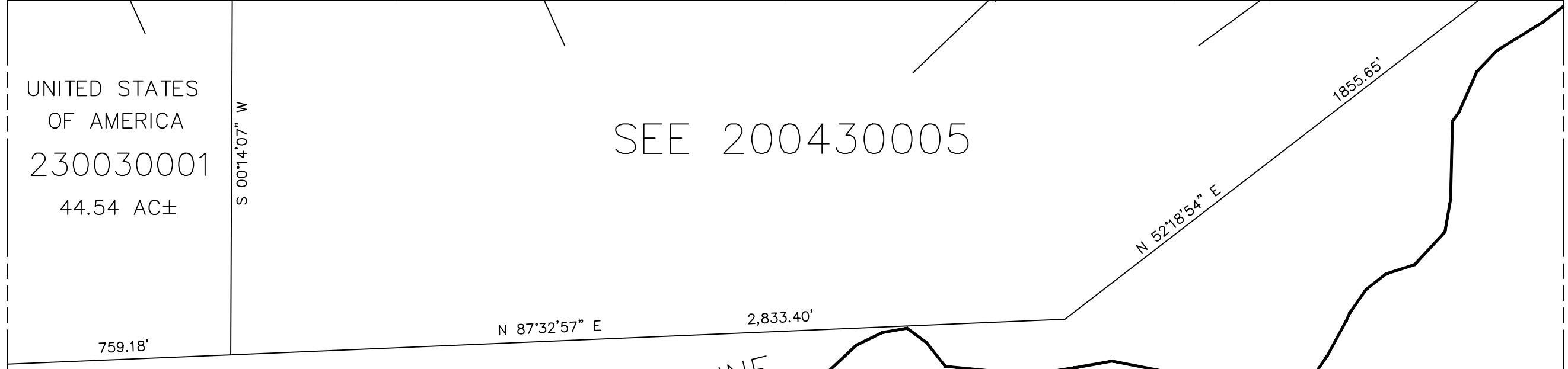
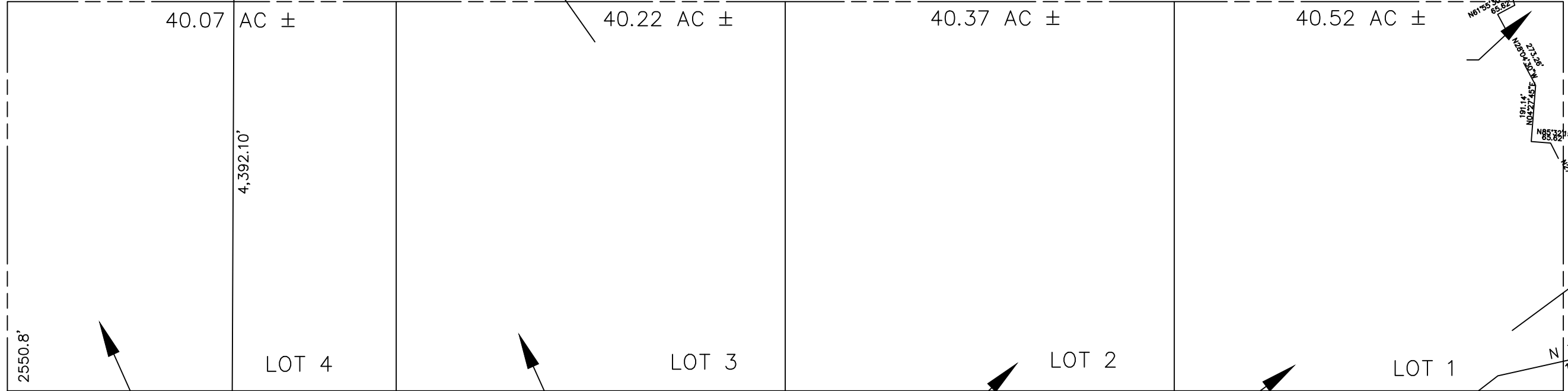
SECTION 4, T.5N., R.1E., S.L.B. & M.

IN WEBER COUNTY

SCALE 1" = 400'

TAXING UNIT: 318

SEE BOOK 20, P. 43



SEE PAGE 4

SEE PAGE 2

SEE PAGE 1

NOTE: WEBER/MORGAN ASSESSMENT LINE CHANGED TO COUNTY LINE - 1998